

Dual-Pol Products

[Weather.gov](https://www.weather.gov) > [Jackson, Mississippi](https://www.weather.gov/jackson) > Dual-Pol Products

Jackson, Mississippi

Weather Forecast Office

[Current Hazards](#) [Current Conditions](#) [Radar](#) [Forecasts](#) [Rivers and Lakes](#) [Climate and Past Weather](#) [Local Programs](#)



The dual-pol upgrade brings several new radar products to the existing suite of products provided by our WSR-88Ds. In addition to three new base products, there are also several new products which are derived from the new dual-pol products and existing radar products. Many of the derived products are related to precipitation accumulation. Scroll down the page or choose one of the options below for more information about each individual product. See [the applications page](#) for information on how these products may be used together to reveal a particular weather feature.

Base Products

- [Correlation Coefficient](#)
- [Differential Reflectivity](#)
- [Differential Phase Shift](#)

Derived Products

- [Specific Differential Phase](#)
- [Hydrometeor Classification](#)
- [Hybrid Hydrometeor Class.](#)
- [Melting Layer](#)

Derived Precipitation Products

- [Digital Precipitation Rate](#)
- [Digital Accum. Array](#)
- [One Hour Accumulation](#)
- [Dig. Storm-Total Accum.](#)
- [Storm Total Accumulation](#)
- [Digital User-Selectable Accum.](#)
- [Digital One Hour Difference](#)
- [Digital Storm Total Difference](#)

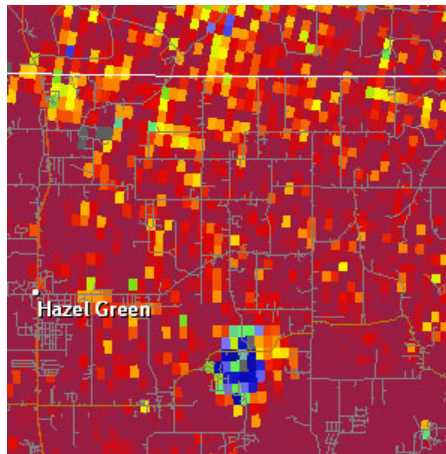
Base Products

Correlation Coefficient (CC)

Resolution: 1° x 0.25 km, 256 data levels
Possible Values: 0.2 to 1.05 / **Units:** (none)
 Available at all elevation angles

Definition: Correlation coefficient (also referred to as ρ or ρ_{hv}) provides a measure of the consistency of the shapes and sizes of targets within the radar beam. A higher value shows a higher consistency in the size and shape of radar targets, while a lower value indicates greater variability in shapes and sizes.

Uses: CC can be used to help distinguish between meteorological and non-meteorological targets, find the melting layer, identify giant hail, identify tornadic debris, and check the quality of other dual-pol products.

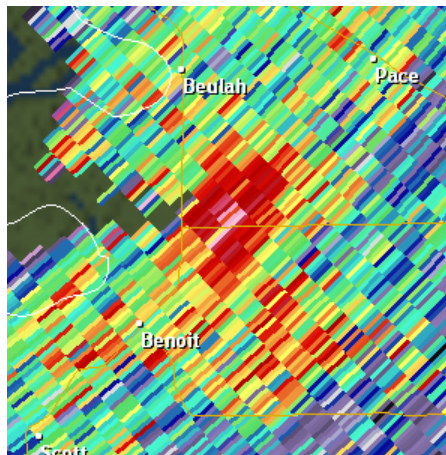


Differential Reflectivity (ZDR)

Resolution: 1° x 0.25 km, 256 data levels
Possible Values: -7.9 to 7.9 / **Units:** dB
 Available at all elevation angles

Definition: Differential Reflectivity is the logarithm ratio of the horizontally polarized reflectivity to the vertically polarized reflectivity. Positive values of ZDR indicate that dominant hydrometeors are larger in the horizontal than in the vertical. Negative values indicate dominant hydrometeors are larger in the vertical than the horizontal. Values near zero indicate that hydrometeors are similar in size in the vertical and horizontal.

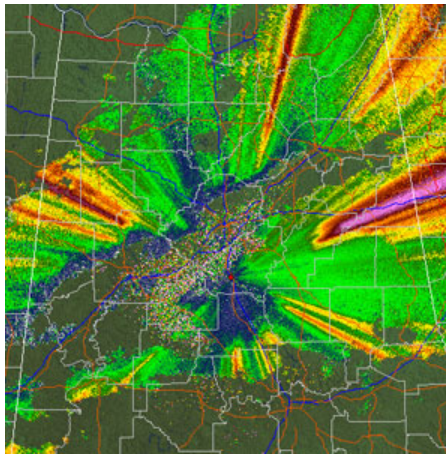
Uses: ZDR can be used to help identify hail shafts, detect updrafts, determine rain drop size, and identify aggregation of dry snow.



Differential Phase Shift (Φ_{DP})

Resolution: 1° x 0.25 km, 256 data levels
Possible Values: 0 to 360 / **Units:** deg
 Available at all elevation angles

Definition: Differential Phase Shift (Φ DP or PHI) is a measure of the difference in 2-way attenuation for the horizontal and vertical pulses in a pulse volume. As vertical and horizontal radar pulses pass through a particular target, the two pulses attenuate, or slow down, causing each pulse's phase to change. Φ DP shows the difference in phase shift between the horizontal pulse and the vertical pulse. This provides information about the shape and concentration of radar targets. However, Φ DP values are cumulative along a particular radar radial, which makes it more difficult to interpret. See [Specific Differential Phase \(KDP\)](#) for an easier way to view this data.



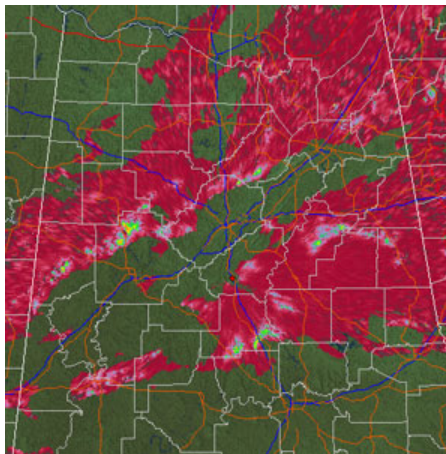
Derived Products

Specific Differential Phase (KDP)

Resolution: 1° x 0.25 km, 256 data levels
Possible Values: -2 to 10 / **Units:** deg/km
 Available at all elevation angles

Definition: Specific Differential Phase is a derived product that shows the gradient, or change, in [Differential Phase Shift \(\$\Phi\$ DP\)](#). Positive KDP values indicate greater phase shift in the horizontal than the vertical.

Uses: Increasing KDP is an indication of an increase in the size and concentration of rain drops, and thus, an increase in rain rate. This means that KDP is useful for pinpointing areas where the heaviest rainfall is occurring. Compare the sample KDP image at right to the sample Φ DP image above from the same time to see how it is much easier to pick out areas of interest.

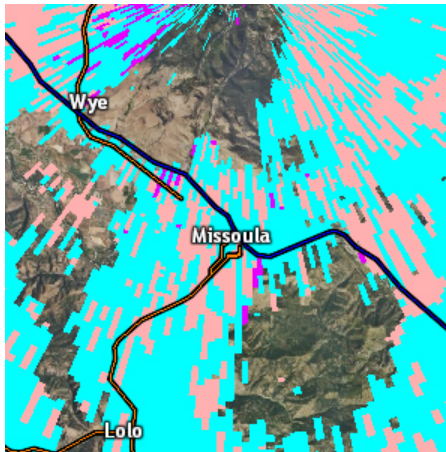


Hydrometeor Classification (HC)

Resolution: 1° x 0.25 km, 13 data levels used
Possible Values: BI,GC,IC,DS,WS,RA,HR,BD,GR,HA,UK, RF
 Available at all elevation angles

Definition: The HC product attempts to provide a representation of radar echo types (out of 10 possible echoes - biological, clutter, ice crystals, dry snow, wet snow, rain, heavy rain, big drops, graupel, and hail) in each radar range bin. It uses information from the base reflectivity, [ZDR](#), [CC](#), [KDP](#), base velocity, and Φ DP products to make each determination.

Uses: HC can provide a first-guess for precipitation type, and it can help point out non-precipitation echoes.



Hybrid Hydrometeor Classification (HHC)

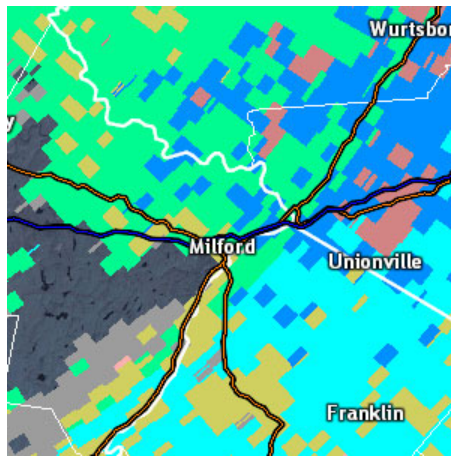
Resolution: 1° x 0.25 km, 12 data levels used

Possible Values:

BI,GC,IC,DS,WS,RA,HR,BD,GR,HA,UK, RF
One product per volume scan

Definition: The HHC product uses output from the [Hydrometeor Classification](#) products at each elevation angle to make a cumulative "best guess" of echo type.

Uses: The HHC was created specifically to be used as the input for the dual-pol quantitative precipitation estimation (QPE) algorithm. Thus it serves an important role in improving precipitation estimates.

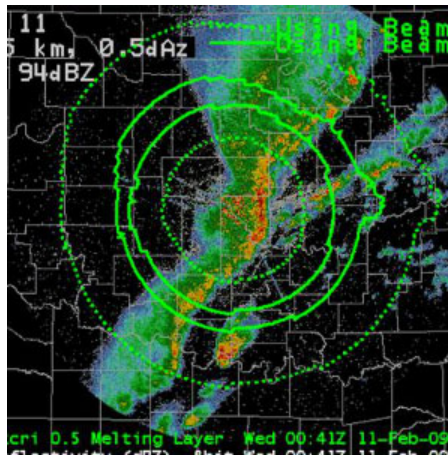


Melting Layer (ML)

Can be overlaid at each elevation angle

Description: The melting layer (ML) is represented by four concentric rings drawn around the radar. The inner ring represents the point where the top edge of the radar beam enters the ML, the next ring where the beam centerpoint enters the ML, the next ring where the beam centerpoint exits the ML, and the outermost ring where the bottom edge of the beam exits the ML. The dual-pol melting layer algorithm uses the reflectivity, [ZDR](#), and [CC](#) products to make its height estimations, and thus is impacted by the availability of sufficient radar echoes.

Uses: This product can supplement observed ROAB data and model data in helping determine the approximate freezing/melting height and the approximate wet bulb 0° height.



Derived Precipitation Products

Digital Precipitation Rate (DPR)

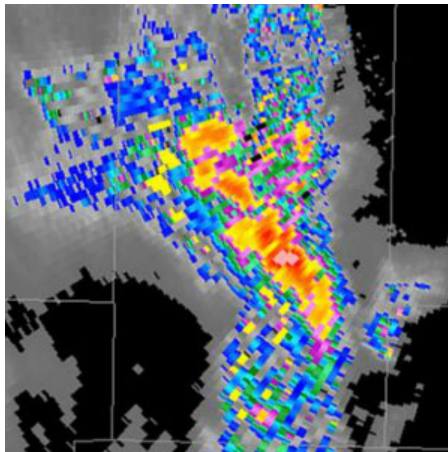
Resolution: 1° x 0.25 km, 65,536 data levels

Possible Values: 0+ / **Units:** inches/hour

One product per volume scan

Definition: The Digital Precipitation Rate is a product that displays instantaneous precipitation rate information in 0.001 inch/hour increments. This product uses [HHC](#) as an input.

Uses: The most obvious use for this product is to pick out areas where the heaviest rain is occurring at the current time.

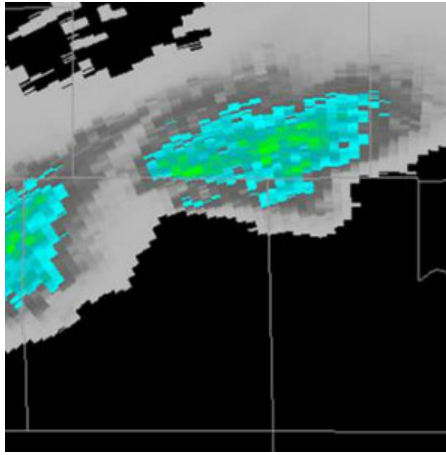


Digital Accumulation Array (DAA)

Resolution: 1° x 0.25 km, 256 data levels
Possible Values: 0+ / **Units:** inches
 One product per volume scan

Definition: The Digital Accumulation Array product provides a dual-pol estimate of how much rain has fallen over the past hour, updated each radar volume scan. A bias is never applied to this product to attempt to improve it. This product is comparable to the [OHA](#), which does provide bias correction.

Uses: This product is intended to provide useful precipitation accumulation information and to help forecasters monitor for potential flash flooding. Because no bias is applied, it provides an idea of the raw dual-pol precipitation estimates.

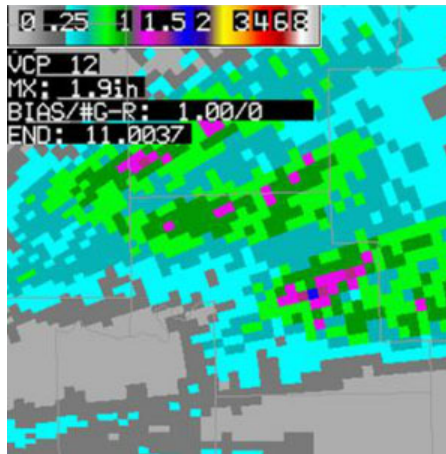


One Hour Accumulation (OHA)

Resolution: 1° x 2 km, 16 data levels
Possible Values: 0+ / **Units:** inches
 One product per volume scan

Definition: The One Hour Accumulation product provides a dual-pol estimate of how much rain has fallen over the past hour, updated each radar volume scan. A bias can be applied to this product to attempt to improve output. It is comparable to the [DAA](#), which does not provide bias correction. It is analogous to the pre-dual pol product OHP.

Uses: This product is intended to provide useful precipitation accumulation information and to help forecasters monitor for potential flash flooding.

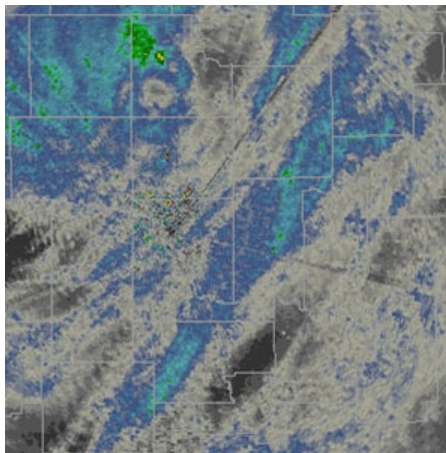


Digital Storm Total Accumulation (DSA)

Resolution: 1° x 0.25 km, 256 data levels
Possible Values: 0+ / **Units:** inches
 One product per volume scan

Definition: The Digital Storm Total Accumulation product provides a dual-pol estimate of how much rain has fallen since the beginning of a precipitation event, updated each radar volume scan. A bias can be applied to this product to attempt to improve output. This product is comparable to the [STA](#), which is a lower-resolution product.

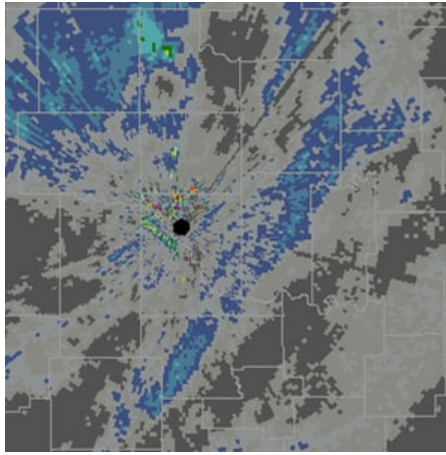
Uses: This product is intended to provide useful precipitation accumulation information and to help forecasters monitor for potential flash flooding.



Storm Total Accumulation (STA)

Resolution: 1° x 2 km, 16 data levels
Possible Values: 0+ / **Units:** inches
 One product per volume scan

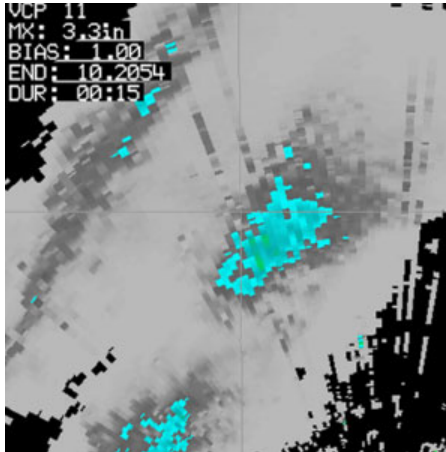
Definition: The Storm Total Accumulation product provides a dual-pol estimate of how much rain has fallen over the past hour, updated each radar volume scan. A bias can be applied to this product to attempt to improve output. It is comparable to the [DSA](#) product, but STA is a lower-resolution product, which makes it analogous to the pre-dual pol product STP.
Uses: This product is intended to provide useful precipitation accumulation information and to help forecasters monitor for potential flash flooding.



Digital User-Selectable Accumulation (DUA)

Resolution: 1° x 0.25 km, 256 data levels
Possible Values: 0+ / **Units:** inches
 Possible durations range from 15 minutes to 24 hours

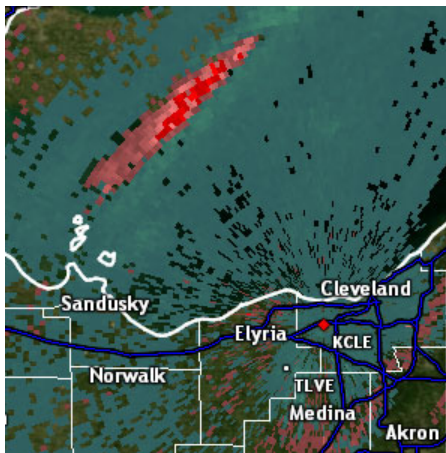
Definition: The Digital User-Selectable Accumulation product provides a dual-pol estimate of how much rain has fallen over a time period selected by the local National Weather Service office. A bias can be applied to this product to attempt to improve output.
Uses: This product is intended to provide useful precipitation accumulation information and to help forecasters monitor for potential flash flooding.



Digital One-hour Difference (DOD)

Resolution: 1° x 0.25 km, 256 data levels
Units: inches
 One product per volume scan

Definition: The Digital One-hour Difference product shows the difference between the dual-pol [DAA](#) one-hour precipitation accumulation product and the legacy OHP precipitation accumulation product. Bias cannot be applied to this product.
Uses: This product is intended to highlight the differences between dual-pol precipitation estimation products and legacy precipitation estimation products.



Digital Storm-total Difference (DSD)

Resolution: 1° x 0.25 km, 256 data levels
Units: inches
One product per volume scan

Definition: The Digital Storm-total Difference product shows the difference between the dual-pol [DSA](#) storm-total precipitation accumulation product and the legacy STP precipitation accumulation product. Bias cannot be applied to this product.
Uses: This product is intended to highlight the differences between dual-pol precipitation estimation products and legacy precipitation estimation products.

